

MONTHLY MEMBERSHIP PROGRESS REPORT

LOCATION INDIA

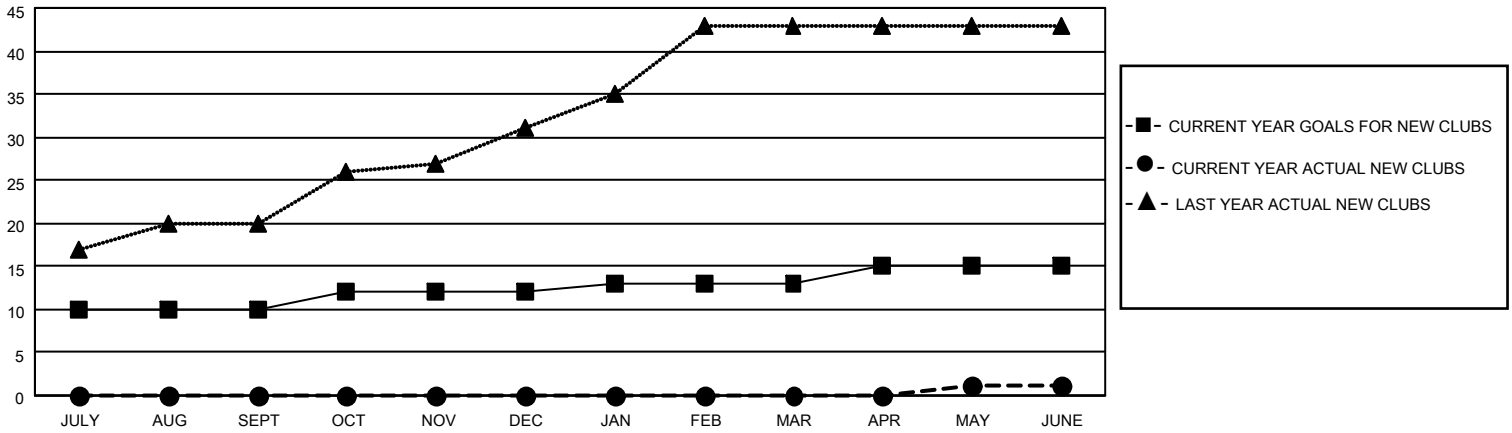
District 320 B

Results as of: 6/30/2023

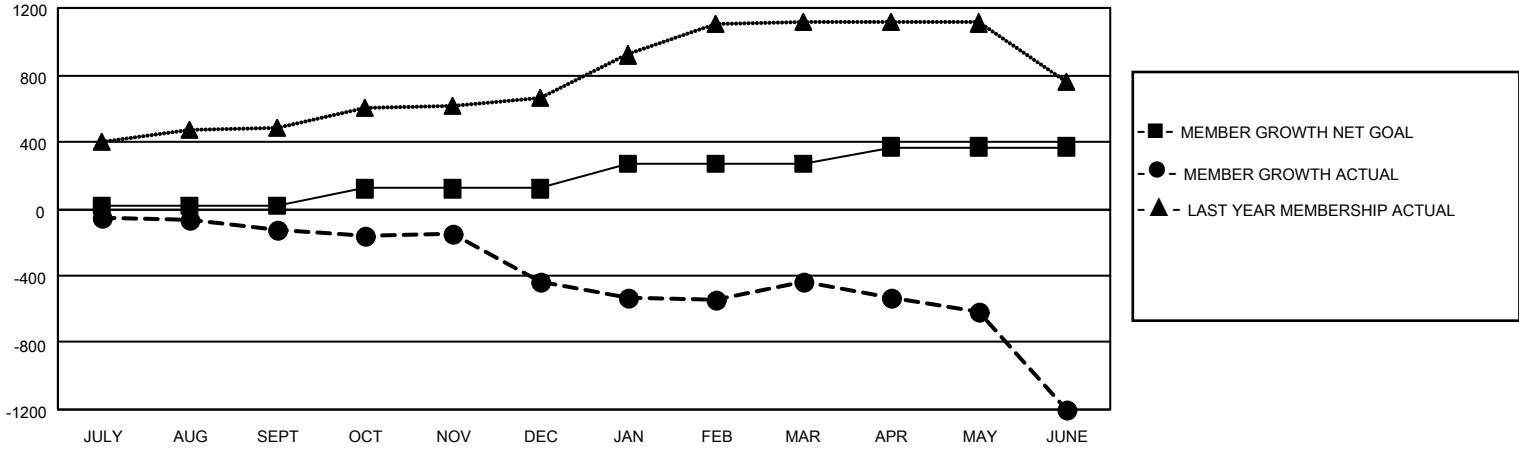
Clubs			
RESULTS FOR 2022-2023			
QUARTER	NEW CLUB GOAL	NEW CLUBS	DROPPED CLUBS
JULY/AUG/SEPT	10	0	15
OCT/NOV/DEC	2	0	10
JAN/FEB/MAR	1	0	6
APR/MAY/JUNE	2	1	16

Members			
RESULTS FOR 2022-2023			
QUARTER	MEMBER GROWTH NET GOAL	MEMBER GROWTH ACTUAL	DROPPED MEMBERS ACTUAL (including transfers)
JULY/AUG/SEPT	20	139	255
OCT/NOV/DEC	100	82	384
JAN/FEB/MAR	150	182	140
APR/MAY/JUNE	100	98	837

GOALS AND ACTUAL NEW CLUBS CUMULATIVE



GOALS AND ACTUAL MEMBERS CUMULATIVE



DROPPED CLUBS: 47

53 CLUBS OF 101 ADDED 1 OR MORE NEW MEMBERS

GENDER DISTRIBUTION

MALE	1,093 (61.75%)
FEMALE	677 (38.25%)
NON BINARY	0 (0.00%)
PREFER NOT TO ANSWER	0 (0.00%)

DROPPED MEMBERS

[CLICK HERE FOR CUMULATIVE MEMBERSHIP DATA](#)

DECEASED	10
CLUB CANCELLED	424
OTHER	1,182
TOTAL	1,616

TOTAL FAMILY UNIT MEMBERS 1,133

FAMILY MEMBERS PAYING HALF DUES 620